

RTI-7500

High Speed PCB Inspection System

Color Mega-Pixel Camera Technology

Low False Failure Rate

Easiest to train

Fastest Return on Investment

Best Price Performance

The RTI-7500's cutting edge technology, with its high-speed inspection and exceptional resolution checks solder joints, leads and verifies part installation with unmatched speed and accuracy.

With its increased field of view (FOV), the RTI-7500 can quickly and accurately check each component for presence, absence, correct part, polarity, skew, dimensional placement accuracy as well as solder defects, two to four times faster than traditional systems.

The RTI-7500 utilizes high speed high-resolution color mega-pixel cameras, decreasing indexing time, and optimizing throughput. The advanced image processing system integrates color and gray scale inspection, allowing for superior detail and greatly reduced false failures. This capability is a tremendous advantage for electronics manufacturers who require a total solutions inspection system.



Automated PCB Inspection for:

- ✓ *Component presence and position*
- ✓ *Correct component*
- ✓ *Orientation/Polarity*
- ✓ *Skew/Tombstoning*
- ✓ *Solder defects and many others*
- ✓ *Paste Inspection Option*
- ✓ *RDS Rework Software Compatible*

The RTI-7500 offers the PCB manufacturer unsurpassed yield improvement solutions to improve quality, increase throughput and profit.

CR Technology

125 Columbia, Aliso Viejo, CA 92658-1458

Ph: 949/446-0445 Fax: 949/446-0445

www.critechnology.com

CR Technology
Superior Vision Proven Results

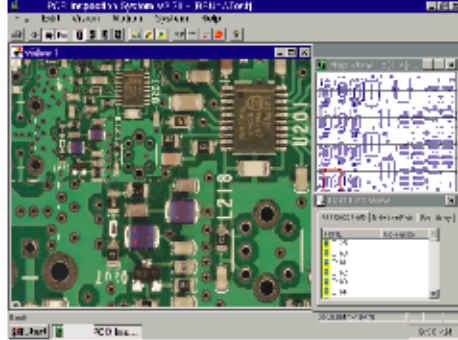
RTI-7500

SPECIFICATIONS

Vision Processor Proprietary High-speed normalized color/grayscale correlation processor with on-screen menu, graphic overlays

Controller Industrialized Pentium PCI-bus

Cameras Two color 1280 x 960 pixel, IEEE 1394 cameras on indexing mount. Each camera field of view optimized for small and large components. FOV: 2" and 1".



Operator Interface 15" LCD SVGA Monitor
Pass/Fail lamps
Start test switch
On-screen menus for setup and board training. Trackball control.
Windows Graphic User Interface

Operating System: Windows NT 4.0

Maximum board size 18" x 20"

IO On-screen failure report with video defect review.
Disk file with results; defect types and locations.
Ethernet. Output to optional Rework Data Server yield management system.

On-Line Support CR ANYWHERE™ interactive remote support for training, diagnosis and software upgrades.

Specifications subject to change without notice

Dimensions and utilities for the RTI-7500

Width 41" (1041mm)
Depth 60" (1524mm)
Height 63" (1600mm)
Weight 1300 pounds (593kg)
Power 110/220VAC+/- 10%
@ 10 amps, 50/60Hz

SMEMA Compatible

CR Technology	125 B Columbia, Aliso Viejo, CA 92656-1456	CE
Ph: 949/448-0443 fax: 949/448-0445	www.critechnology.com	